

## Liquid Filter Magnet

High Intensity – Rare Earth



Standard Design



Bespoke Design

The Eclipse Magnetics high intensity Liquid Filter magnetic separator has been designed to operate in pressurised transfer lines to provide protection against ferrous and para-magnetic contamination.

The housing comprises a vessel, magnetic lid assembly and

able in two versions, single wall and double wall (jacketed for heated pipelines).

The filter can be used in any line that processes liquids at all viscosity levels and can be installed at any angle from vertical to horizontal. A common installation location is tanker loading and discharge to inspect outgoing and incoming materials.

The filter can be supplied to suit various processing volumes, pressures, temperatures and specifications.

### Cleaning

The filter uses the Eclipse Magnetics 'Easy Clean' system.

To clean, simply release the quick release band clamp, remove the contaminated cartridge from the housing and remove the magnetic cores from the tube assembly. All attracted contamination can be easily removed allowing for inspection or further analysis.

### Suitable Products

Chocolate, molasses, jam, syrup, juice, sauce, pastes, soup, pickles, spreads, beverages etc.

### Suitable Locations

All, vertical, horizontal or angled.

### Benefits

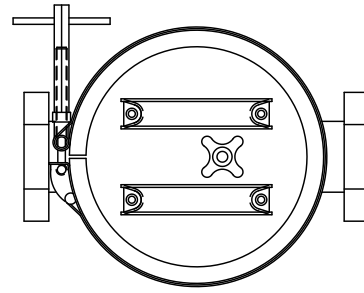
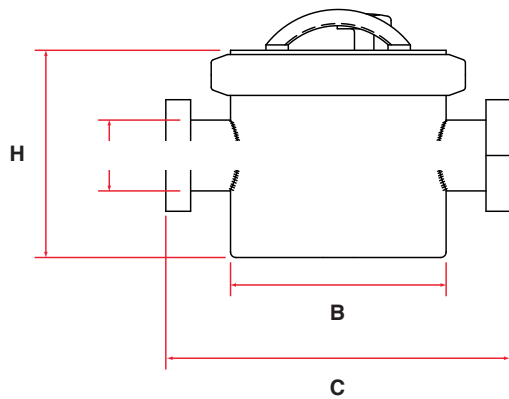
- Easy to clean
- Removes sub-micron sized contaminants
- Meet audit requirements
- Rare earth 9.000 Gauss
- No consumables
- No pressure drop

### Category

Secondary protection - fines.



# Technical Data



## Product Information

Part Number	Spout dia. A mm	Dia. B mm	C mm	H mm	No. Rods	Weight kg
<b>Single wall</b>						
ILF200 / 50	50	200	350	200	7	22
ILF200 / 75	75	200	350	200	7	22
ILF300 / 50	50	300	450	300	9	36
ILF300 / 75	75	300	450	300	9	36
ILF300 / 100	100	300	450	300	9	36
<b>Jacketed</b>						
ILF200 / 50 / J	50	200	350	200	7	22
ILF200 / 75 / J	75	200	350	200	7	22
ILF300 / 50 / J	50	300	450	300	9	36
ILF300 / 75 / J	75	300	450	300	9	36
ILF300 / 100 / J	100	300	450	300	9	36

## Performance

**Magnetic performance** 9,000 Gauss high strength  
**Performance reading** On tube surface  
**Magnetic material** Rare earth neodymium iron boron  
**Magnet grade** N45 – Inspected and confirmed via hysteresis graph prior to use  
**Temperature** -20°C / +90°C  
**Pressure** + / - 6 Bar

## Materials

**Housing** 316 grade stainless steel  
**Tubing** 316 grade stainless steel – aerospace quality  
**Other Parts** 316 grade stainless steel  
**Surface finish** Brushed internally / externally to 1.2µm  
**Sealing** Silicon rubber O-ring, brown  
**Band Clamp** 304 grade stainless steel

## Options

- Stainless steel handles
- High temperature samarium cobalt magnetic material +250°C
- 11,000 Gauss fixed design
- Overpressure to 30 Bar
- 304 grade stainless steel
- Pharmaceutical specification
- ATEX certified
- Flanged to suit
- Safety relay switch

If you have any more questions, require technical assistance or would like a quotation, please contact us.

[www.eclipsemagnetics.com](http://www.eclipsemagnetics.com)

Eclipse Magnetics Ltd, Atlas Way, Sheffield, S4 7QQ, England

T +44 (0)114 225 0600 F +44 (0)114 225 0610 E [info@eclipsemagnetics.com](mailto:info@eclipsemagnetics.com) W [www.eclipsemagnetics.com](http://www.eclipsemagnetics.com)

While every effort has been made to ensure the accuracy of the information in this publication please note that specifications may change without notice.

